



*“Preparing the next generation of Public Leaders”*

## About PRC:



**POKHARA**  
RESEARCH CENTRE

Pokhara Research Centre is a research-based, non-partisan organization that works on the socio-economic dimensions of public policy. PRC promotes economic freedom and good governance by integrating the international principles of individual choice, liberty, and equal opportunity in enterprise. Its programs and initiatives are designed to align with the democratic values of free expression and the rule of law. PRC's major working includes Research, Training, and Advocacy.

## What is YPG:



The Youth in Policy & Governance (YPG) Fellowship is a distinctive year-long program providing individuals aged 20-30 with the opportunity to acquire knowledge about lawmaking, public policy, and governance. This is achieved through a structured curriculum, mentorship, and direct collaboration with members of the Provincial Assembly, serving as their knowledge and research assistants.

### Why:

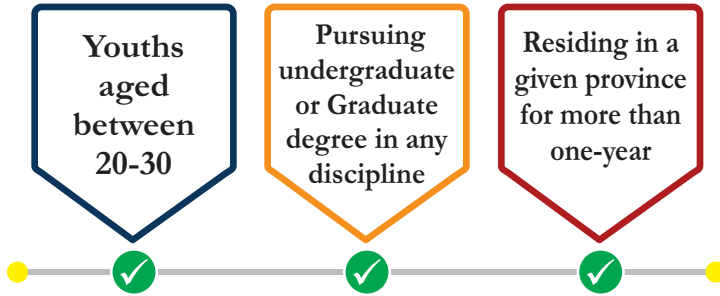
#### Vision

To strengthen democracy at the sub-national level through youth participation in parliamentary process.

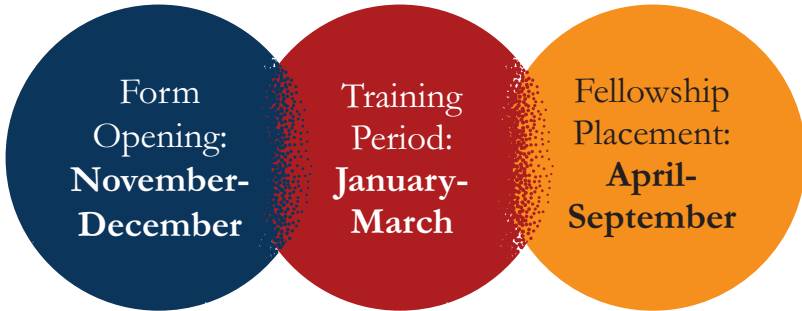
#### Mission

To engage, educate, train & mobilize Youths in the process of Provincial Legislation.

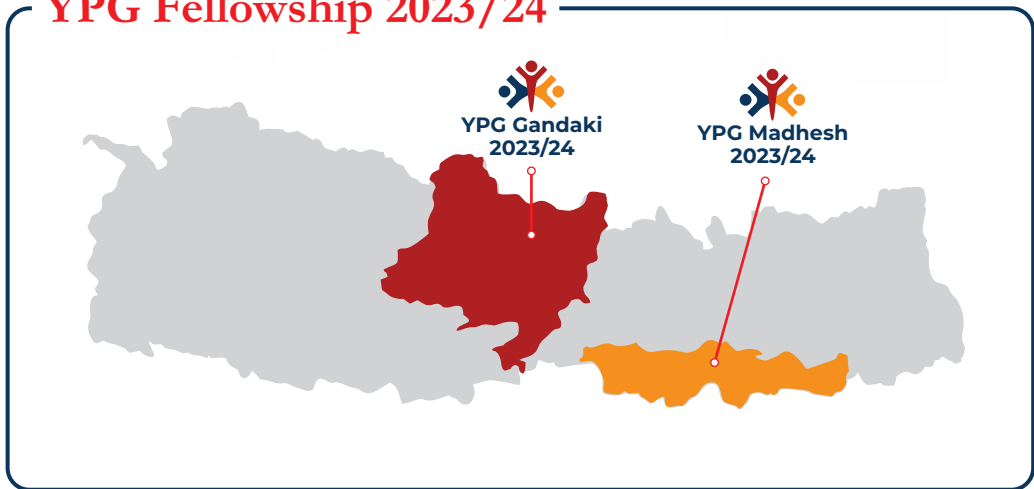
# Eligibility



# Program Timeline



# YPG Fellowship 2023/24



# Role of YPG Fellow

Throughout the fellowship placement, fellows are involved in following responsibilities.

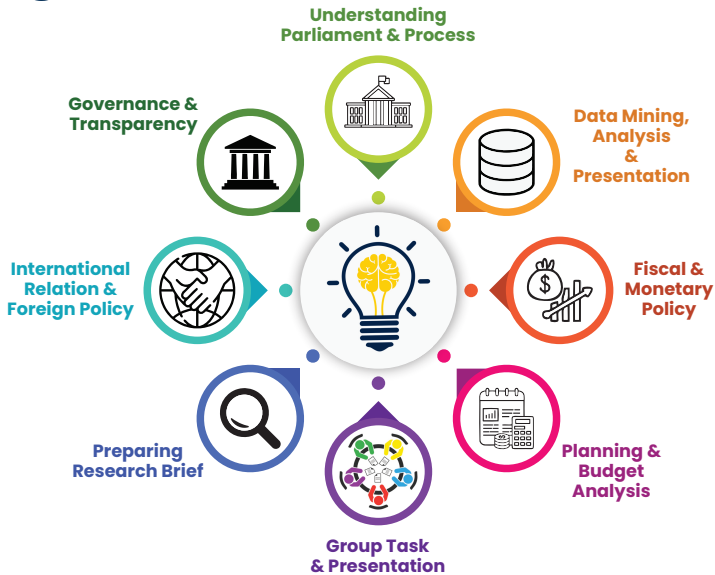
Knowledge/  
Research support  
to MPAs

Preparing  
Researches/  
Policy Briefs

Parliamentary  
Tracking

Parliamentary  
Discourse

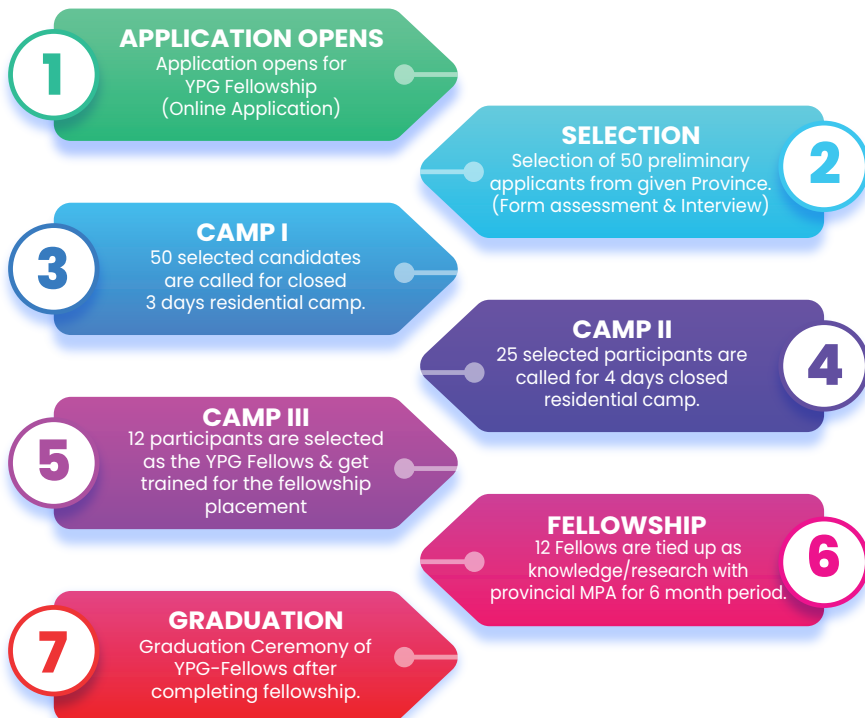
## Learning Tree:



# Curriculum Module

Module	Overall Weightage of learning hour	CAMP-I	CAMP-II	CAMP-III
Understanding Self & Participation	20%	3 hours/ 2 sessions	5 hours/ 2 sessions	2 hours/ 1 session
Understanding Government, Society and Media	20%	2 hours/ 1 session	6 hours/ 3 sessions	3 hours/ 2 sessions
Understanding Policy, law and Governance	40%	5 hours/ 2 sessions	13 hours/ 5 sessions	6 hours/ 2 sessions
Understanding Politics and Economics	20%	2 hours/ 2 sessions	6 hours/ 3 sessions	3 hours/ 1 sessions
<b>Total</b>	<b>100%</b>	<b>12 hours/ 7 sessions</b>	<b>30 hours/ 13 sessions</b>	<b>14 hours/ 6 sessions</b>

## Process Map



# Our Milestone

## YPG Gandaki 2020/21



## YPG Gandaki 2021/22



## YPG Karnali 2021/22



## YPG Gandaki 2022/23



## YPG Koshi 2022/23



Contact Us:

**Pokhara Research Centre (PRC)**

Pokhara, Kaski, Gandaki Province, Nepal

Tel.: 061-587111

Email: [centre.pokhara@gmail.com](mailto:centre.pokhara@gmail.com)

Website: [www.pokharacentre.org](http://www.pokharacentre.org)